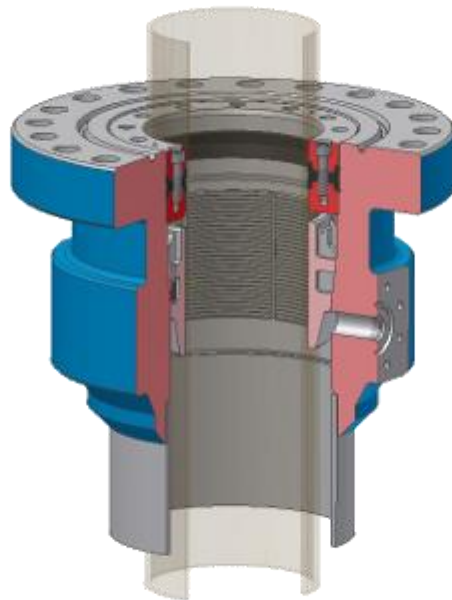


Base Flange

HARTMANN VALVES gear of the Base Flange series are manufactured exclusively from forged steels, and are available in all sizes and implementations common to the industry, as well as also to customer specifications. The lower armature pipe connector can be equipped with API and other threads, as well with a weld-on variation. Another option commonly provided by HARTMANN VALVES is the implementation of the Body Flange with a matching pipe provided by the customer, fully welded and tested. The side outlets are of course available in the standard version, displaced by 180° in different API 6A variants. Upon customer request we also manufacture different outlet variants with a flexible arrangement of 90°.



Our manufacturing program

- Lower connections: Welded with o-ring seal, bolted together with o-ring seal, wedge connection system
- API head flange sizes 21.1/4", 20.3/4", 18.5/8", 16.3/4", 13.5/8", 11", 9.5/8", 7.1/16" quick connects
- API pressure stages: 2.000 PSI, 3.000 PSI, 5.000 PSI, 10.000 PSI
- API temperature classes: L, N, P, R, S, T, U
- API material classes: AA, BB, CC, DD, EE, FF, HH
- API PSL test classes: PSL 1, PSL 2, PSL 3, PSL 3 G
- additional nominal sizes and pressure levels upon request!